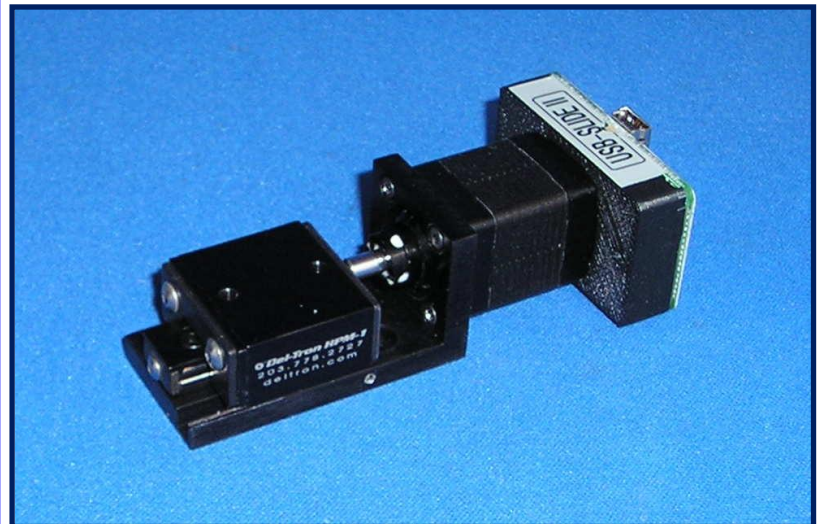


USB-Slide II

System Features

- Small precision stepper motor controlled linear slide (**\$665 each, single piece**)
- Draws power from a standard USB port , no external power supply required
- Fully self-contained, with onboard control and driver electronics
- Small system size of 4.3 cm X 9.2 cm (1.7" X 3.6")
- Move loads of over 1.0 Kg (~2.2 pounds)
- Linear range motion of about 9mm (~0.35")
- Positional resolution of 1.5 microns (0.00006")
- Power efficient, holds position with no power
- Built-in magnetic (Hall effect) home sensor
- PC Windows based user interface included for easy "out of the box" motion control
- LabView and C examples with a DLL file included for custom automated application



The USB-Slide II is a motorized precision linear slide for automated applications. Powered and controlled solely by a standard USB port, this system provides the method of automated control unmatched in size, simplicity, and ease of use.

The USB-Slide application software runs on any standard PC with Windows-XP/Vista with a standard USB port. This user interface provides for velocity (step speed), and position (step) control. All position movements are relative to the home (fully retracted) position. A built-in magnetic (Hall) sensor is used to establish this home position. Each USB-Slide has a unique serial number to allow multiple devices to be controlled with the use of an externally powered USB Hub.

Data Optics, Inc.

115 Holmes Road • Ypsilanti MI 48198-3020

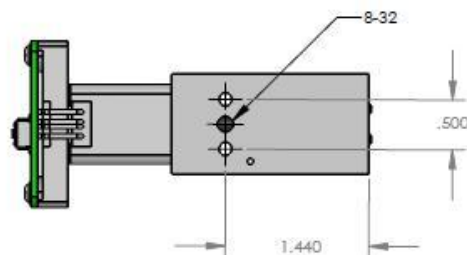
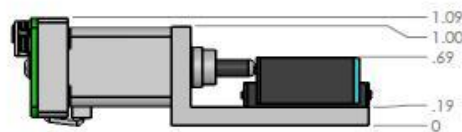
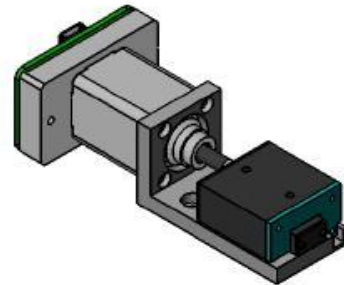
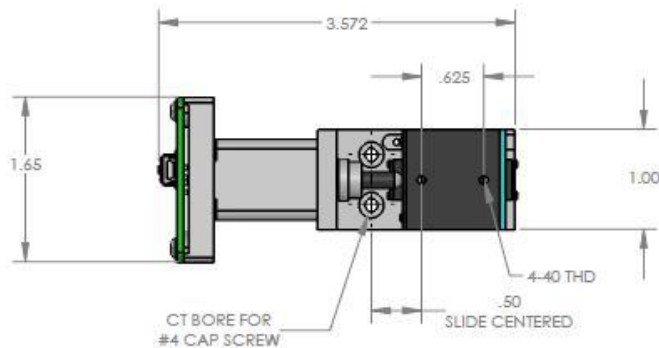
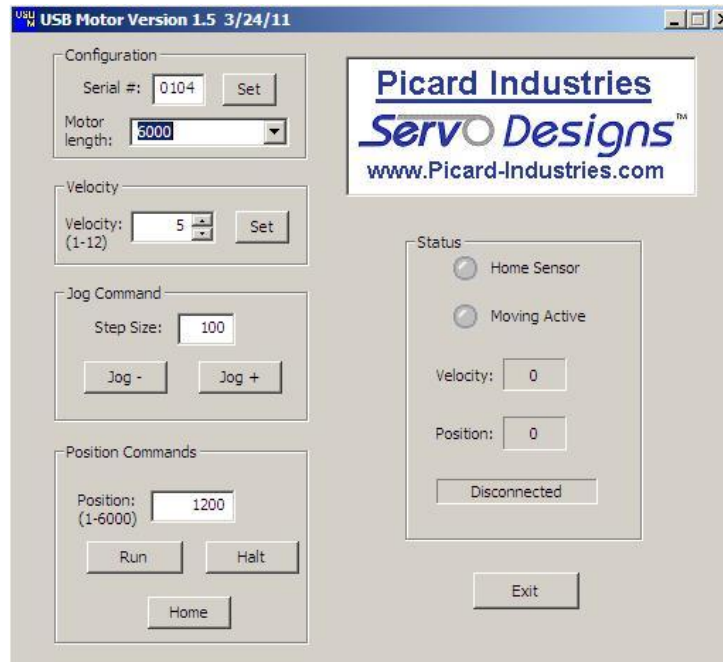
(800) 321-9026 • (734) 483-8228

www.DataOptics.com

E-mail: Sales@DataOptics.com

USB Motor/Slide User Interface

Below is a screen shot of the control software that is provided with the USB-Motor/Slide system. This software comes on a CD and will automatically begin the setup process upon insertion into any standard PC with a Windows-XP/VISTA operating system. After the software has been successfully loaded, simply attach the USB-Slide II to a USB port with the provided cable. Enter the unit's serial number and click the Set configuration button. The software will auto-detect the connection in the Status box and allow you to begin controlling the position of the motor/slide.



Picard Industries
USB-Slide II